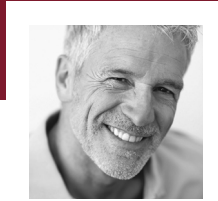
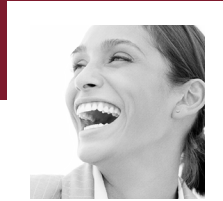




# Rainforest

## *Sesso Dolce Romance Ready Blends*



### ingredients

100% pure, Certified Organic and Wildcrafted oils of Vetiver, Jasmine, Ylang Ylang Complete, Sandalwood, Orange, blood; Monoi, and Fir, balsam

### availability

5ml Bottle



Inhaling Essential Oils stimulates an area of the brain called the Limbic System, which governs moods and emotions. The inhalation can trigger varying emotional and physical responses in people, and aphrodisiac Essential Oils have the ability to invoke romantic feelings.

Rainforest is a tropical, feminine scent with sultry undertones. It can be used as a perfume, or diluted for use as a body or room spray.

### ingredient highlights

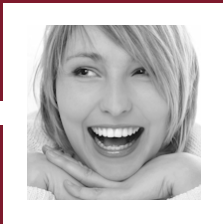
**Vetiver** Essential Oil stimulates the limbic system and acts as a natural aphrodisiac that increases libido and sparks sexual desire. A stress-free mind is a vital requirement for sexual health, and sexual disorders like frigidity, impotence, and lack of libido are often vested with the limbic system of the brain. Vetiver stimulates the limbic system, pacifies the mind, and serves as an effective natural remedy for such health disorders.

**Jasmine** Essential Oil puts people in the mood for love, while also enhancing libido and feelings of sexual desire. It can assist with problems such as premature ejaculation, frigidity, impotence, and various other sexual disorders. When used as perfume and inhaled, Jasmine can awaken innocence, sweetness and purity. Through the limbic region of the brain, Jasmine influences the emotional part of us. No other oil is able to so intensely change our mood.

**Ylang Ylang Complete** is particularly useful in helping with a rapid heartbeat and rapid breathing. It is associated with the Heart Chakra and is thought to support the heart on both a physical and emotional level. Ylang Ylang Complete is said to work with the cardiovascular, endocrine, and hormonal systems, as well as supporting emotional and spiritual balance.

**Sandalwood** Essential Oil is well known for its meditative and relaxing properties; it slows the breathing and supports deeper concentration and connection; but it also has aphrodisiac properties and is a fragrance most men enjoy. Sandalwood can enhance feelings of connection, calm emotions, and foster self-acceptance which in turn strengthens relationships with others. Sandalwood is similar to a man's natural body scent, and though barely perceptible, it sends out a highly effective erotic signal to the opposite sex.





## ingredient highlights (cont'd)

**Blood Orange** is considered a natural antidepressant, and has been credited with generating feelings of security. Blood Orange may open the Throat Chakra, promoting communication and enabling us to ask others (and ourselves) for what we want and need. This ability to stimulate open communication makes Blood Orange Essential Oil a valued aphrodisiac.

**Monoï** is an ancient Tahitian word meaning 'scented oil', and Monoï Oil has been made for at least a few thousand years. Blossoms of the Tiare flower (*Gardenia taitensis*) are placed in coconut oil, and in a short time the oil is infused with the flowers' aroma.

**Balsam Fir** is a great aphrodisiac that can improve stamina, bring energy and muscular strength, and clear the mind to help one focus.

## suggested usage

### Bath

- Add 10 to 15 drops of Rainforest to ½ to 1 cup of Pink Himalayan or Dead Sea bath salts, and add to bath water. Soak 10 to 20 minutes for best results. For intensive therapy, soak once a day; if you can't do a full bath you can do a foot soak instead.
- For a foot bath, add 8 to 12 drops of Primal to ½ cup of Pink Himalayan or Dead Sea bath salts, and soak feet 10 to 20 minutes for best results.
- Soaking in the Rainforest bath warms and energizes the Heart Chakra, creating a feeling of being loved and cared for.

### Misting Spray

- Mix 12 to 15 drops in a 4 ounce cobalt blue spray bottle of distilled water. Mist around the heart area, front and back. Shake well before use.
- Mix 6 to 8 drops in a 2 ounce cobalt spray bottle to carry with you; mist generously whenever you need emotional support and to give yourself permission to give and receive love. Shake well before use.

### Topical

- Apply 1 to 3 drops of Rainforest to the pulse points on the wrists. A powerful way to affect your Heart Chakra as the meridian for the heart runs through the wrists.
- Apply 1 to 2 drops to the Heart Chakra area between the breasts in the center of the chest, and on the spine at the upper back directly across from the heart application point in front. When applied to the chakra area, you are feeding vibrational frequency into the chakra, providing warmth, nutrients, and strength.

## responsible cautions

- Keep out of reach of children and pets.
- Use as directed, and adhere to Responsible Cautions at [www.godesana.com/cautions.asp](http://www.godesana.com/cautions.asp).
- Store away from sunlight, at room temperature, with lid securely tightened.

### QUALITY ASSURANCE

All oils from goDesana Organics are 100% pure and therapeutic, meaning they are sourced and approved by Alexandria Brighton to the highest standards possible. Our Essential Oils are chosen for their integrity (all chemical constituents important for use are intact), ecological 'soundness' (all are organic or wildcrafted), and the specific chemical constituent percentages that Alexandria Brighton insists upon for efficacy and safety.

### DISCLAIMER

goDesana Organics products have not been evaluated by the FDA and are not intended to treat, diagnose, cure, or prevent any disease. They are not intended as a substitute for the advice or medical care of a qualified health care professional. Seek the advice of your health care professional before undertaking any dietary or lifestyle changes.

©2011 Green Organics International, LLC • ©2013 goDesana, LLC